

Technical Data

The Fluke iSee™ Mobile Thermal Camera - TC01A for Android® Smartphones



Bring iSee™,

See more...

Find more...

- 256 x 192 pixels, detailed image quality
- -10 ~550°C range, covering wide applications
- ±2% or ±2°C accuracy, reliable and stable
- 25Hz frame rate, smooth video without lag

Explore the real world for visible details.

With the Fluke iSee™ Mobile Thermal Camera - TC01A for Android® Smartphones, temperature can be measured and thermal imaging detection can be carried out anytime and anywhere just through the Type C interface of smart phone. It is widely used in the electrical and mechanical equipment inspection, outdoor detection service, household HVAC inspection, field observation, and even children education, which uncovers the invisible world of temperature.

Detailed image quality comparable to professional thermal cameras

- 256 x 192 pixels, detailed image quality
- 10 ~ 550 °C range, covering wide applications
- 50 mk (0.05 °C) thermal sensitivity for fine screening
- ±2% or ±2 °C accuracy to ensure reliable results
- 25Hz frame rate, smooth video without lag
- 10 standard and custom color palettes to achieve a variety of person-alised images

Powerful full temperature range analysis

- Real-time high and low temperature capture, without missing any details
- Adjustable emissivity to cope with different materials
- Comprehensive temperature analysis for spot, line and area, professional-grade thermal imaging software
- Real-time temperature alarm, timely response and processing
- Automatic timelapse shooting, unattended
- Infrared and visible image comparison for locating, comparing and archiving

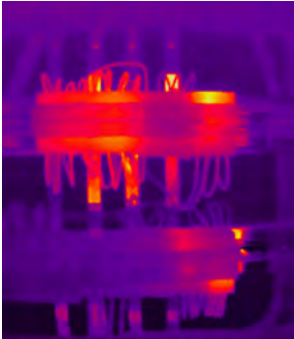
Real-time image sharing, communication without barriers

- Real-time image and video sharing and management, fast and efficient communication
- Easy to add image annotation for smooth communication without barriers

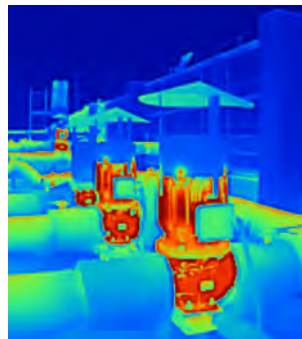
Small and portable, a second to get started

- Compact design as light as 22 g, perfect for the cell phone size
- The iSee™ is made of high quality aluminium material for airway, with uniquely treated and laser etched surface
- 1 meter drop, IP54 ingress protection, Fluke durability
- Optimised Fluke iSee™ application interfaces and menus, with professional operating experience, and it is easy to access all functions

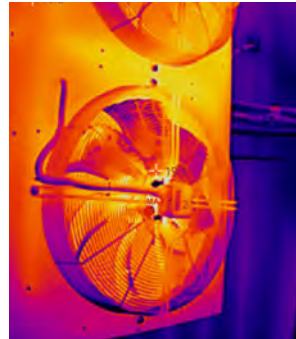
Fluke iSee™ application scenarios



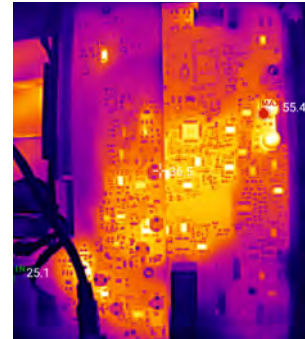
Electrical cabinet



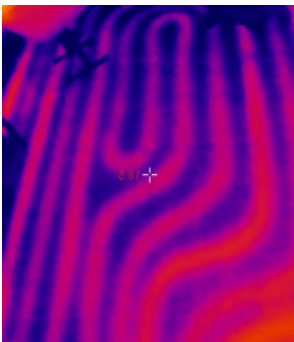
Motor



Fan



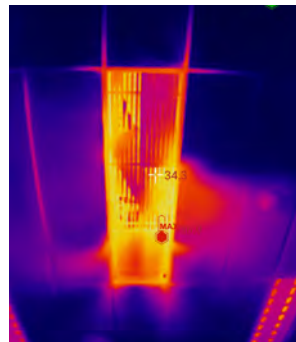
Circuit Boards



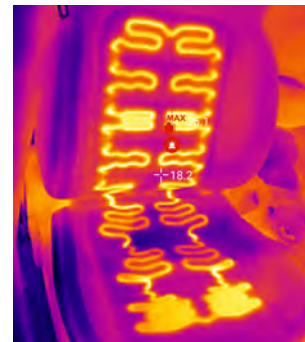
Radiant floor heating



Open country



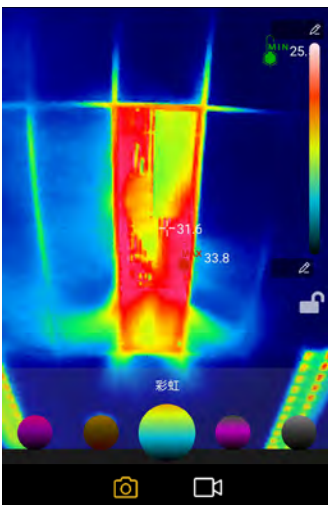
Air conditioner vent



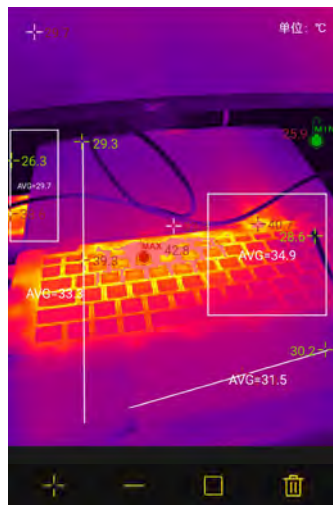
Heated car seats

iSee™ APP icon

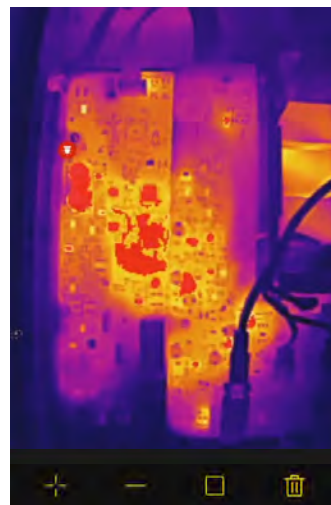
Integrated key functions of a professional thermal camera: shooting, measurement, analysis and sharing.



Palette screenshot



Screenshot of spot and line analysis



Screenshot of sharing images

**The Fluke iSee™ APP supports Android 6.0 / HarmonyOS 2.0 or later and requires smartphones with OTG function enabled*



GET IT ON
Google Play fluke.co/isee-g

Scan code to download the Fluke iSee™ mobile thermal camera app

Detailed Specifications

Performance specifications	
IR resolution	256 x 192
Pixel size	12 µm
Temperature range	-10 °C to 150 °C, 100 °C to 550 °C
Temperature accuracy	± 2% of rdg or ± 2 °C, whichever is greater (@ 25 °C ± 5 °C ambient temperature)
Temperature measurement distance	0.25 m to 5 m
Frame rate	25 Hz
Warm-up time	1 minutes
Focal length	Fixed focal length: 3.2 mm
Shutter mode	Internal
Thermal sensitivity (NETD)	50 mK
Spectral range	8 to 14 µm
Field of view (H x V)	56° x 42°
Spatial resolution	3.81 mrad
General Specifications	
USB Interface	Type-C
Operating temperature	0 °C to 40 °C
Storage temperature	-30 °C to 60 °C
Operating humidity	10% to 90% RH, non-condensing
Power consumption	350 mW (Typical)
Drop test	1 m
Ingress protection	IEC 60529: IP54 (with the protective cover for Type C)
Operating altitude	2000 m
Storage altitude	12000 m
Dimensions(L x W x H)	59 x 32 x10 mm
Weight	22 g
EMC Environment	IEC 61326-1: Portable CISPR 11: Group 1, Class A Group 1: Equipment has intentionally generated and/or uses conductively-coupled radio frequency energy that is necessary for the internal function of the equipment itself. Class A: Equipment is suitable for use in all establishments other than domestic and those directly connected to a low-voltage power supply network that supplies buildings used for domestic purposes. There may be potential difficulties in ensuring electromagnetic compatibility in other environments due to conducted and radiated disturbances. Caution: This equipment is not intended for use in residential environments and may not provide adequate protection to radio reception in such environments.
Warranty	2 years

Ordering Information

- The Fluke TC01A Thermal Camera

Standard accessories

- The Fluke TC01A Thermal Camera
- Packaging box
- User manual



Fluke. *Keeping your world up and running.®*

Fluke Corporation

PO Box 9090, Everett, WA 98206 U.S.A.

For more information:

Fluke Australia
Unit 16/7 Anella Avenue
Castle Hill, NSW, 2154, Australia

Phone: 1300 1 FLUKE (35853)

Fax: +61 2 8850 3300

Website: www.fluke.com.au

©2023 Fluke Corporation. 6/2023